



# KOE Preschool Project Update

10.28.2019



# Introductions and Meeting Purpose

- Introductions
- Meeting Purpose
  - Review Project Phases
  - Discuss Preschool buildings location
- Sustainability and Security Update
  - November 21 - Board Study Session



# Facilities Project Process

**Design Programming/Schematic Phase:** Determination of what spaces and general design are needed to meet building's intended purpose. Includes stakeholder input (staff first and then community) and budget estimates to ensure schematic design is consistent with project budget.



# Facilities Project Process

**Design Development Phase:** Specific construction detail and space dimensions are added to schematic design. Interior and exterior elevations, finishes, utility connections, and exact placement of building are determined. Detailed cost estimates are prepared and design adjusted accordingly. Stakeholder input is solicited.



# Facilities Project Process

**Construction Document Phase:** Design development product is translated into very specific plans and specifications for review/approval by the State Architect. Approved plans are “biddable” by general contractors.

**Construction Phase:** General Contractor builds the project per the DSA approved set of Construction Documents with continuous inspection by a DSA Inspector of Record (IOR).



# FMP Revision Process

- In Spring 2019, the Board directed staff to explore preschool relocation in order to move 9th grade students to DVHS
- Board approved a relocation of preschool program and revised the FMP
- Architect for the project was selected in October
- Project Timeline
  - Design programming/schematic phase has begun (October 2019 - January 2020)
  - Design Development (January-March 2020)
  - Construction Documents (March-September 2020)
  - Construction (September 2020- Spring 2021)
  - Opening (Summer/Fall 2021)

# Concerns Raised to Date

- FMP Plan
- Garden
- Trees
- Noise from preschool play yard

# Current FMP Plan - \$6 million in 2019\$

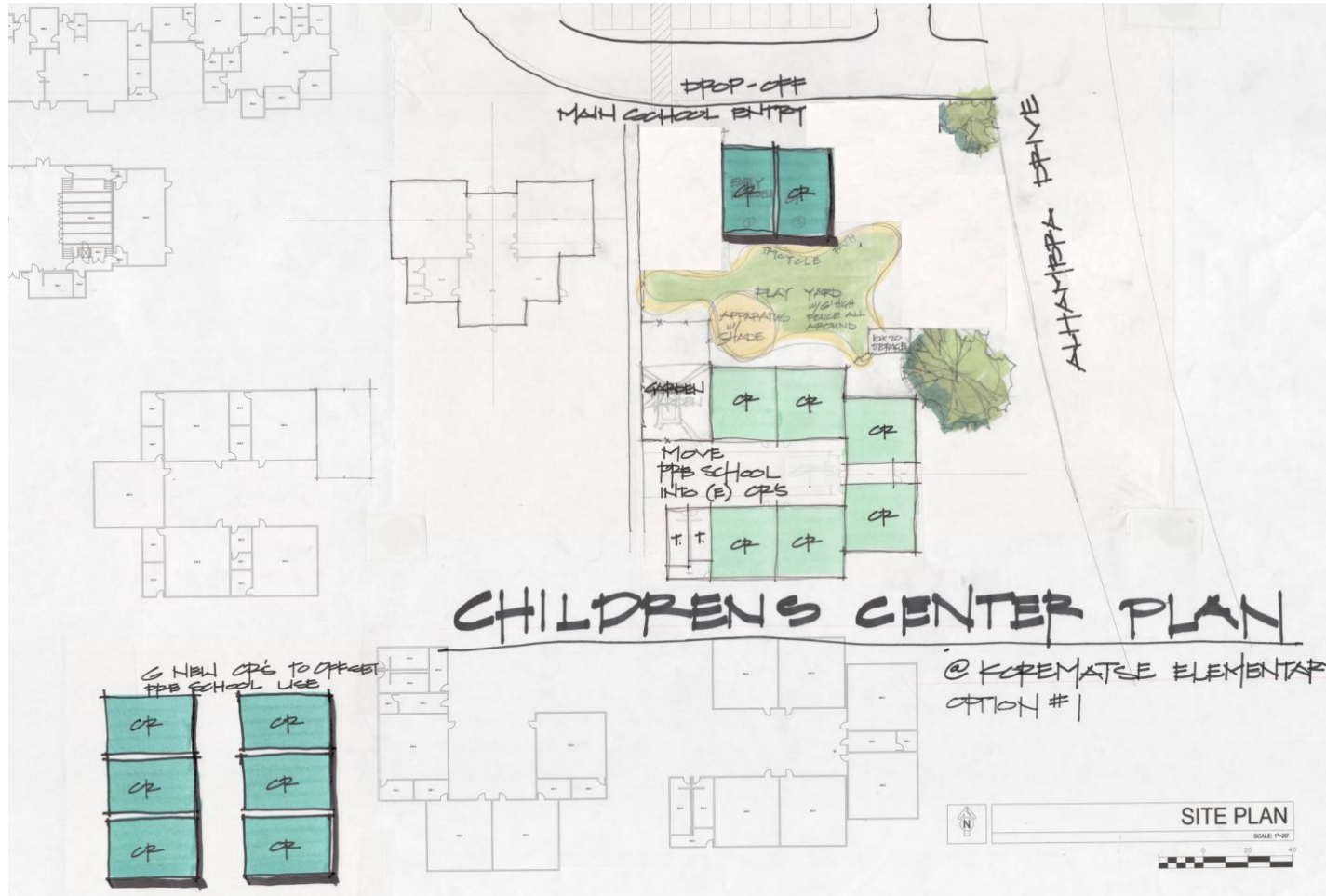




# Location Option A



# Location Options B



# Under Development Option 3



**Questions/Comments?**



# Closing

- Additional feedback can be provided by the cards in the office or sent to [FacilityPlanning@djusd.net](mailto:FacilityPlanning@djusd.net)
- Updated project Boards will be available for viewing as updates are available
- Webpage by project with Key Aspects of the Project and FAQs